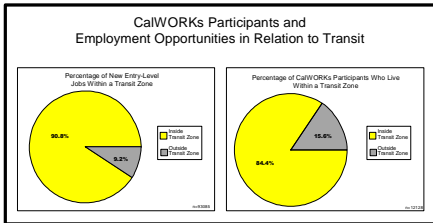
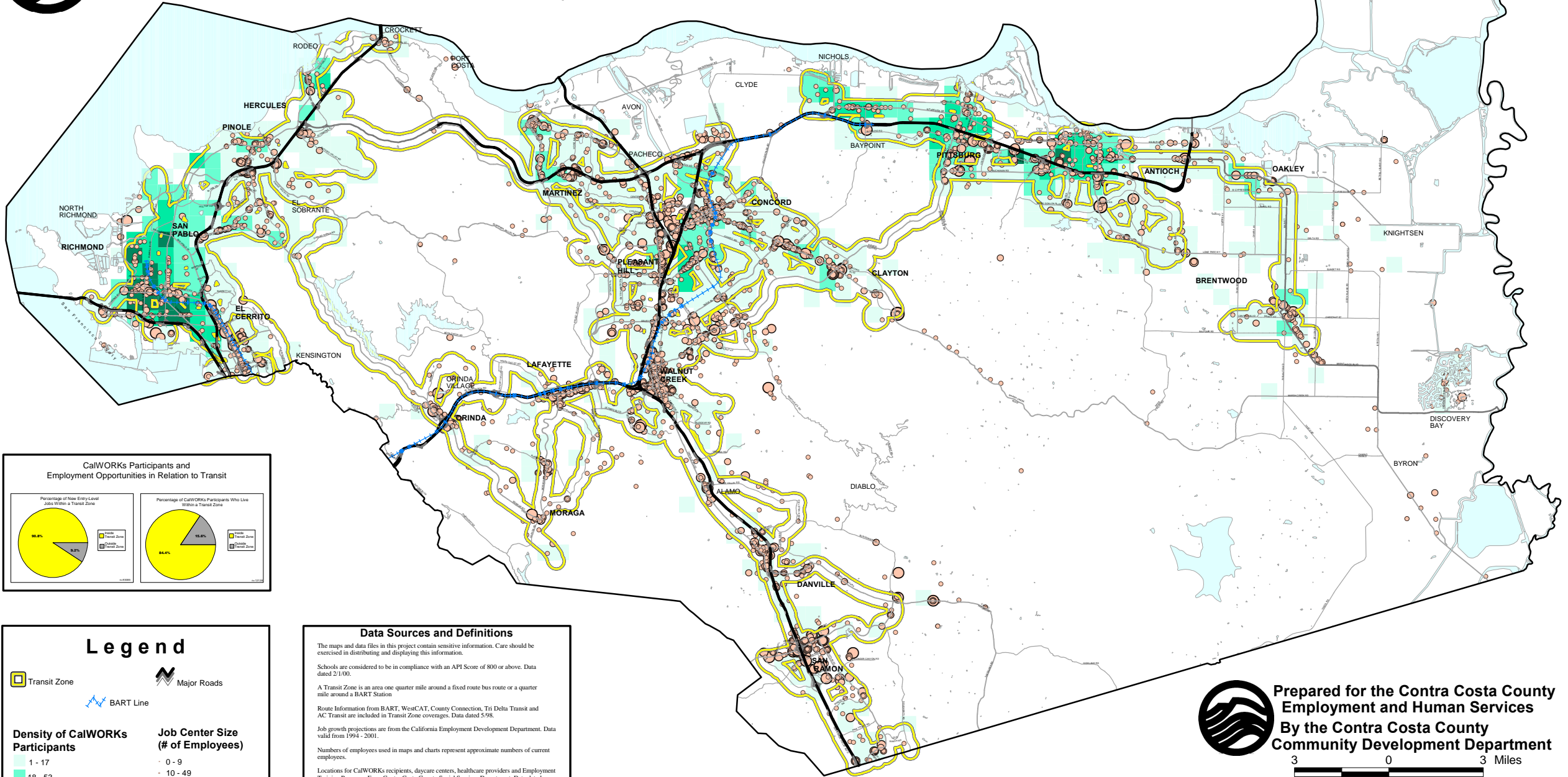




# Contra Costa County Calworks Households and Employment Opportunities in Relation to Transit



### Legend

Transit Zone

BART Line

Major Roads

**Density of CalWORKS Participants**

- 1 - 17
- 18 - 53
- 54 - 116
- 117 - 270

**Job Center Size (# of Employees)**

- 0 - 9
- 10 - 49
- 50 - 99
- 100 - 499
- 500 - 999

**Data Sources and Definitions**

The maps and data files in this project contain sensitive information. Care should be exercised in distributing and displaying this information.

Schools are considered to be in compliance with an API Score of 800 or above. Data dated 2/1/00.

A Transit Zone is an area one quarter mile around a fixed route bus route or a quarter mile around a BART Station

Route Information from BART, WestCAT, County Connection, Tri Delta Transit and AC Transit are included in Transit Zone coverages. Data dated 5/98.

Job growth projections are from the California Employment Development Department. Data valid from 1994 - 2001.

Numbers of employees used in maps and charts represent approximate numbers of current employees.

Locations for CalWORKS recipients, daycare centers, healthcare providers and Employment Training Programs From Contra Costa County Social Services Department. Data dated 2/10/00.

Business Locations are from American Business Information. Data dated 5/98.

Businesses shown are business types which are projected to create the top 60% of new jobs for entry-level workers in Contra Costa County between the years of 1994 - 2001.

**Prepared for the Contra Costa County  
Employment and Human Services  
By the Contra Costa County  
Community Development Department**

This map contains copyrighted information. Reproducing all or any portion of this map is an infringement of copyright law. Users of this map agree to read and accept County of Contra Costa disclaimer of liability and warranties provided herewith.

File Created on 7/16/00  
Contra Costa County Community Development  
651 Pine Street, Martinez, CA 94553-0095  
37.59:48.455N 122.06:35.384W